

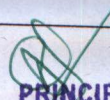


**BABA EDUCATIONAL SOCIETY INSTITUTE OF
PARAMEDICAL COLLEGE OF NURSING**

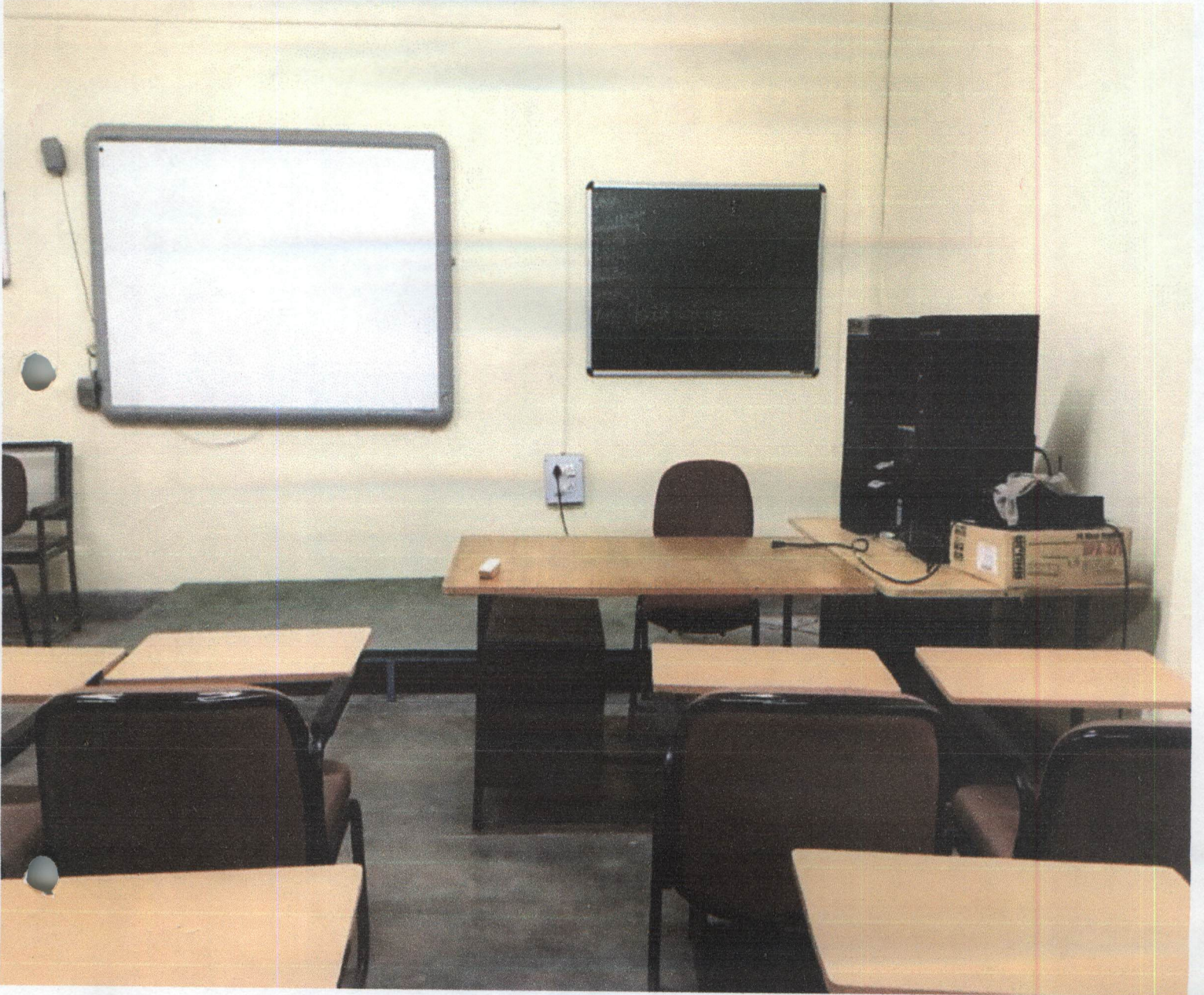



FACILITIES FOR TEACHING LEARNING

S. No	List	Quantity
1	Class Room's	14
2	Staff Room's	2
3	H.O.D Room's	5
4	Nursing Foundation Lab & Advance Nursing Lab	1
5	OBG. & Pediatric Lab	1
6	Community Health Nursing Lab	1
7	Nutrition Lab	1
8	Pre-Clinical Science Lab	1
9	Computer Lab	1
10	Skill Lab	1
11	A.V Aids Lab	1
12	Sports & Cultural Lab	1
13	Conference hall	1
14	Seminar hall	1
15	Library	1
16	Hospital	1




**PRINCIPAL
BABA EDUCATIONAL SOCIETY
COLLEGE OF NURSING
INSTITUTE OF PARAMEDICALS
56, MATIYARI DEVA ROAD
CHINHAT, LUCKNOW-226028**





PRINCIPAL
BABA EDUCATIONAL SOCIETY
COLLEGE OF NURSING
INSTITUTE OF PARAMEDICALS
56, MATIYARI DEVA ROAD
CHINHAT, LUCKNOW-226028

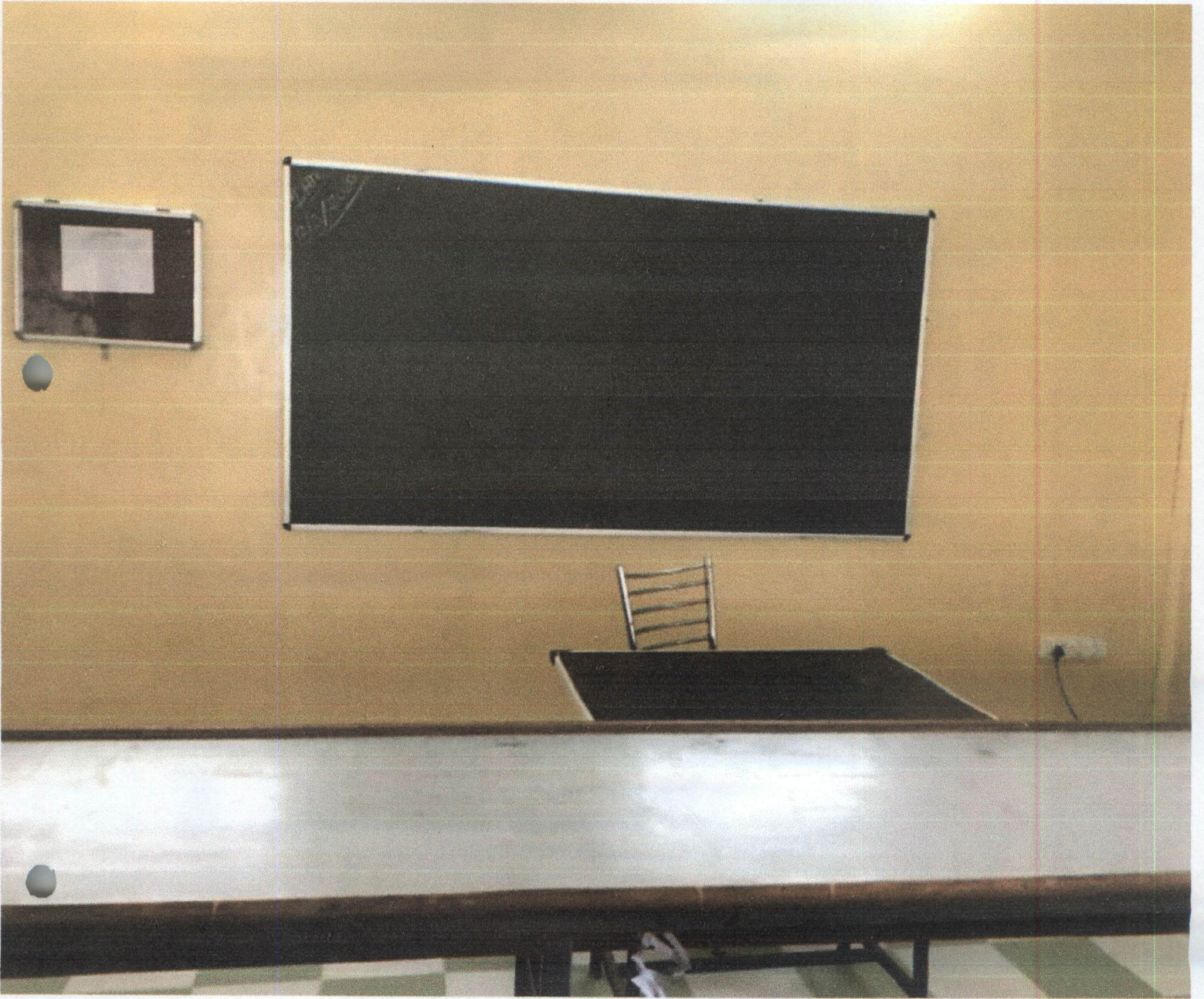




PRINCIPAL
BABA EDUCATIONAL SOCIETY
COLLEGE OF NURSING
INSTITUTE OF PARAMEDICALS
56, MATIYARI DEVA ROAD
CHINHAT, LUCKNOW-226028

Scanned with CamScanner





PRINCIPAL
BABA EDUCATIONAL SOCIETY
COLLEGE OF NURSING
INSTITUTE OF PARAMEDICALS
56, MATIYARI DEVA ROAD
CHINHAT, LUCKNOW-226028





PRINCIPAL
BABA EDUCATIONAL SOCIETY
COLLEGE OF NURSING
INSTITUTE OF PARAMEDICALS
56, MATIYARI DEVA ROAD
CHINHAT, LUCKNOW-226028





PRINCIPAL
BABA EDUCATIONAL SOCIETY
COLLEGE OF NURSING
INSTITUTE OF PARAMEDICALS
56, MATIYARI DEVA ROAD
CHINHAT, LUCKNOW-226028





PRINCIPAL
BABA EDUCATIONAL SOCIETY
COLLEGE OF NURSING
INSTITUTE OF PARAMEDICALS
56, MATIYARI DEVA ROAD
CHINHAT, LUCKNOW-226028





PRINCIPAL
BABA EDUCATIONAL SOCIETY
COLLEGE OF NURSING
INSTITUTE OF PARAMEDICALS
56, MATIYARI DEVA ROAD
CHINHAT, LUCKNOW-226028



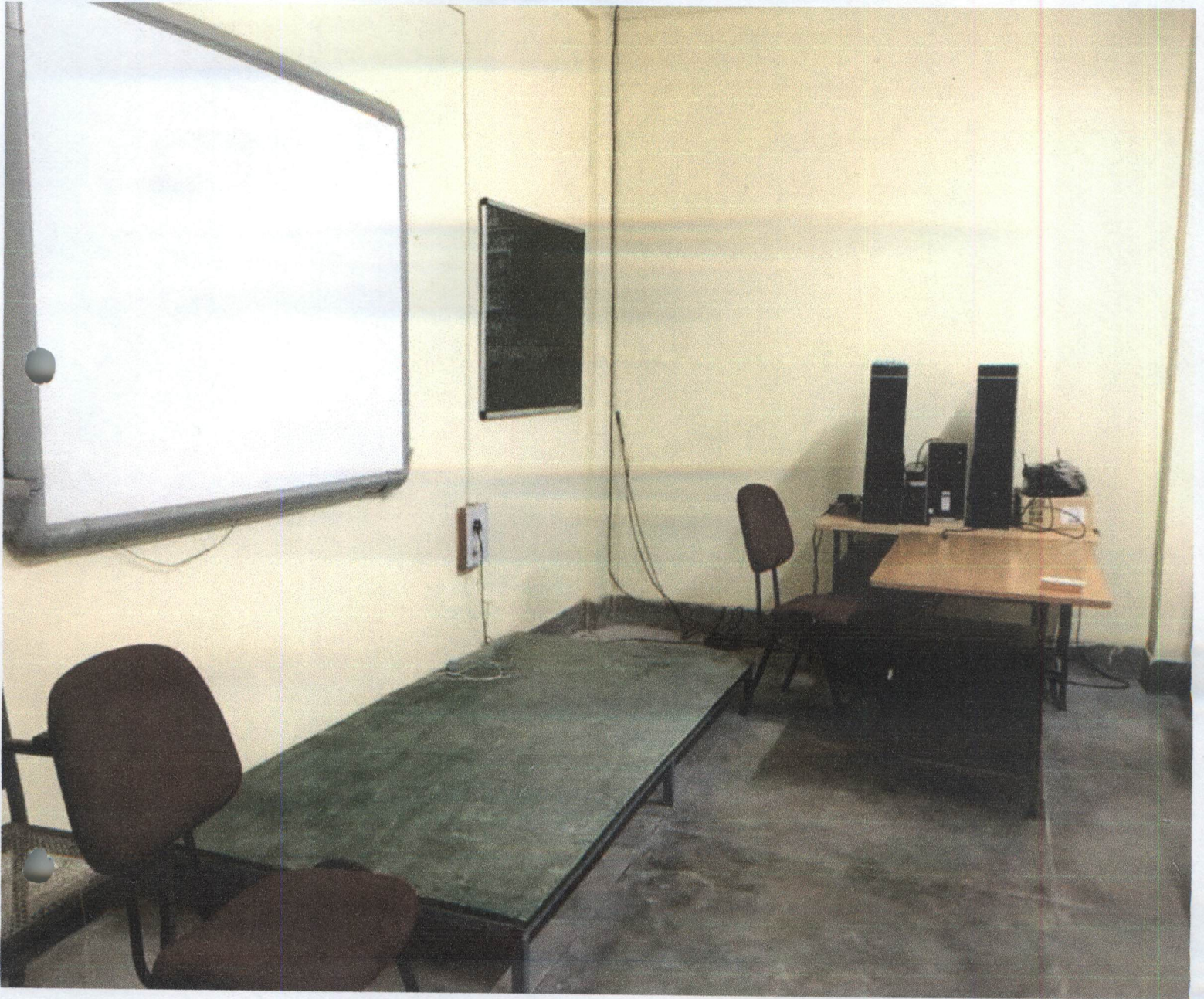

PRINCIPAL
BABA EDUCATIONAL SOCIETY
COLLEGE OF NURSING
INSTITUTE OF PARAMEDICALS
56, MATIYARI DEVA ROAD
CHINHAT, LUCKNOW-226028





PRINCIPAL
BABA EDUCATIONAL SOCIETY
COLLEGE OF NURSING
INSTITUTE OF PARAMEDICALS
56, MATIYARI DEVA ROAD
CHINHAT, LUCKNOW-226028




PRINCIPAL
BABA EDUCATIONAL SOCIETY
COLLEGE OF NURSING
INSTITUTE OF PARAMEDICALS
56, MATIYARI DEVA ROAD
CHINHAT, LUCKNOW-226028





PRINCIPAL
BABA EDUCATIONAL SOCIETY
COLLEGE OF NURSING
INSTITUTE OF PARAMEDICALS
56, MATIYARI DEVA ROAD
CHINHAT, LUCKNOW-226028

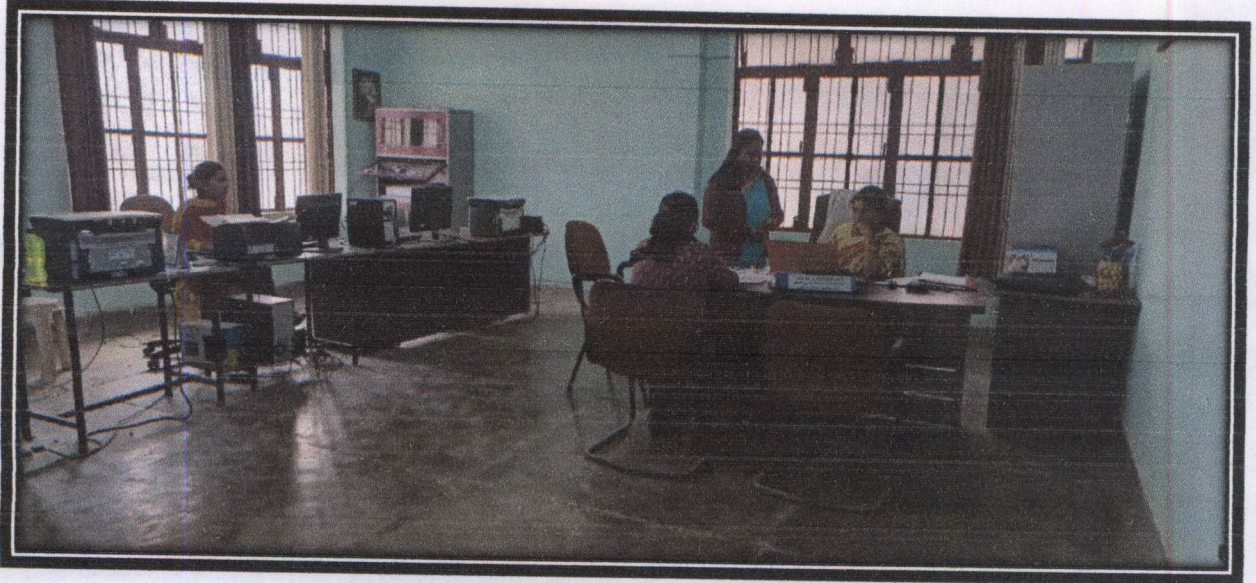



PRINCIPAL
BABA EDUCATIONAL SOCIETY
COLLEGE OF NURSING
INSTITUTE OF PARAMEDICALS
56, MATIYARI DEVA ROAD
CHINHAT, LUCKNOW-226028

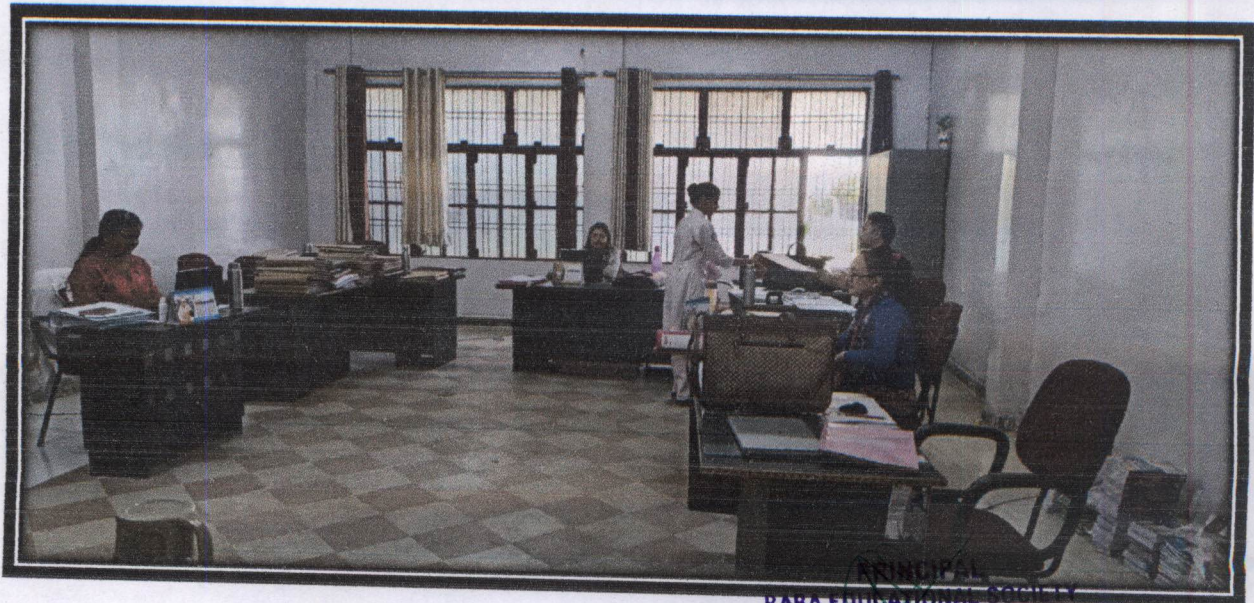
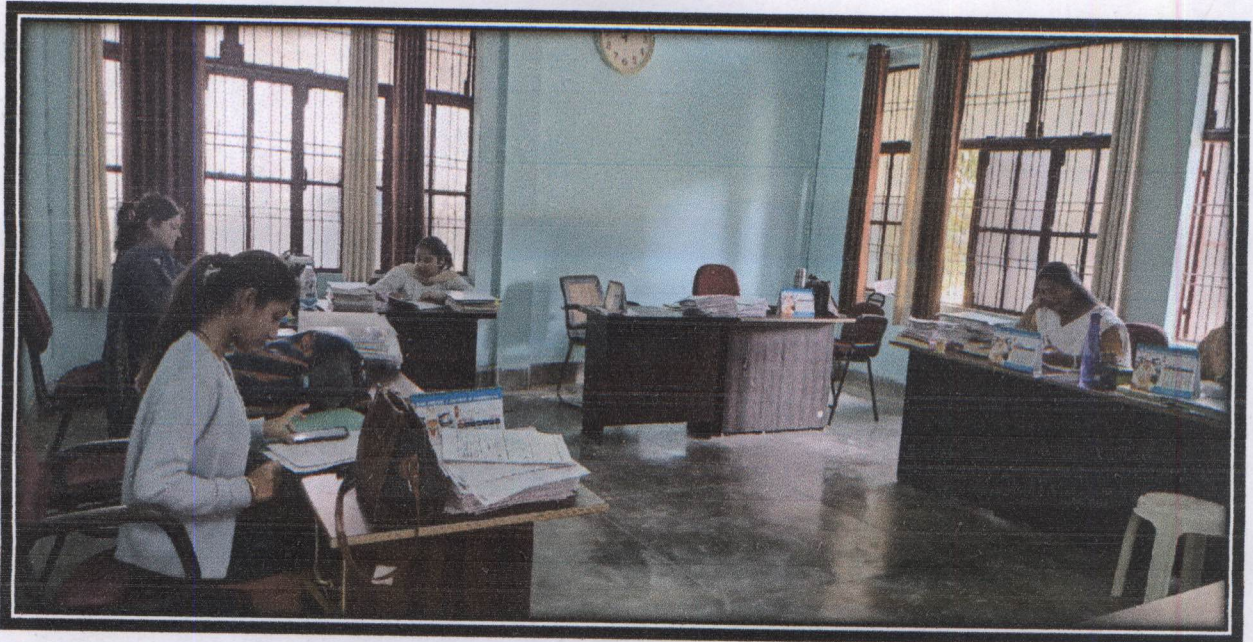



PRINCIPAL
BABA EDUCATIONAL SOCIETY
COLLEGE OF NURSING
INSTITUTE OF PARAMEDICALS
56, MATIYARI DEVA ROAD
CHINHAT, LUCKNOW-226028

IQAC ROOM

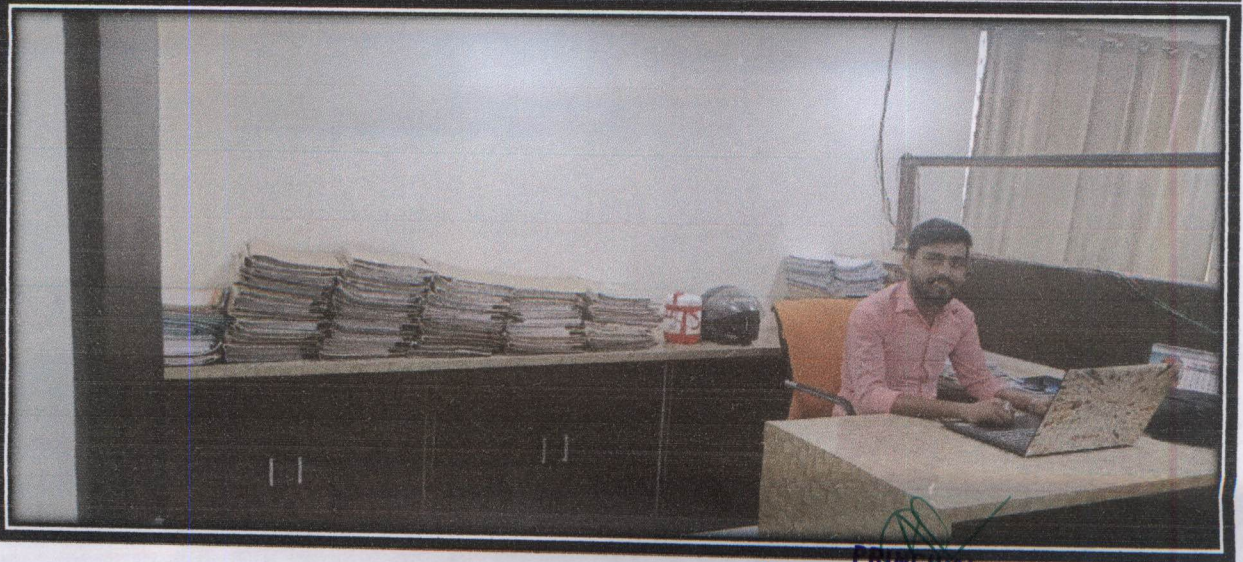


STAFF ROOM

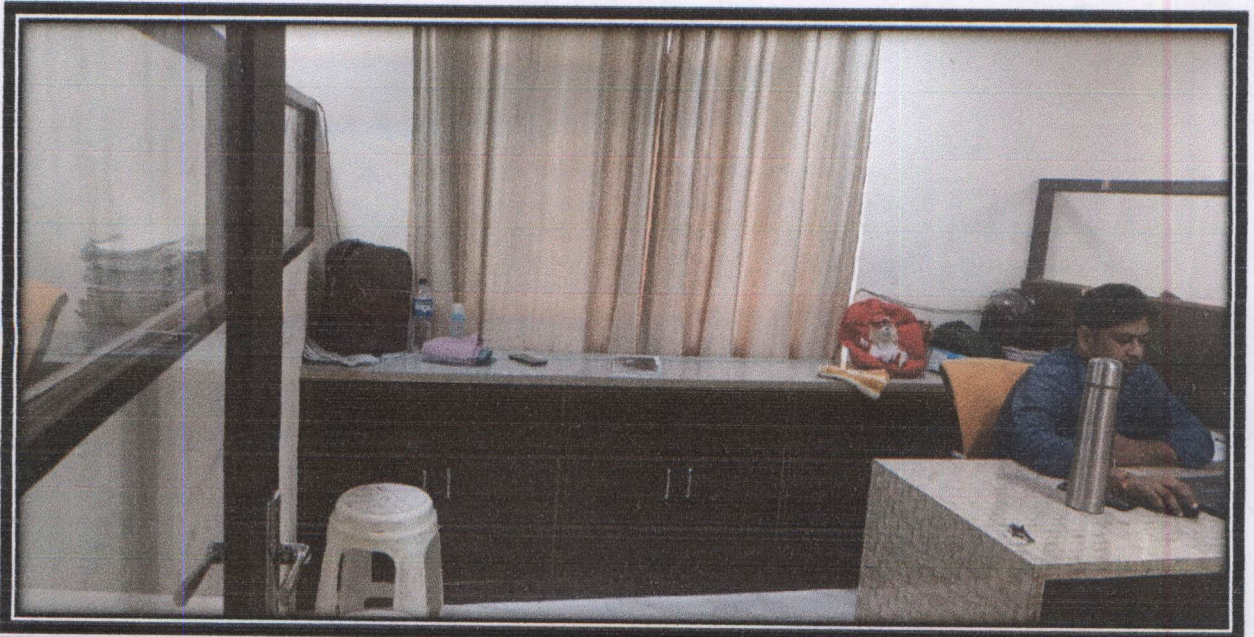


**MUNICIPAL
BABA EDUCATIONAL SOCIETY
COLLEGE OF NURSING
INSTITUTE OF PARAMEDICALS
56, MATIYARI DEVA ROAD
CHINHAT, LUCKNOW-226028**

H.O.D ROOM ALL DEPARTMENT



PRINCIPAL
BABA EDUCATIONAL SOCIETY
COLLEGE OF NURSING
INSTITUTE OF PARAMEDICALS
56, MATIYARI DEVA ROAD
CHINHAT, LUCKNOW-226028



PRINCIPAL
BABA EDUCATIONAL SOCIETY
COLLEGE OF NURSING
INSTITUTE OF PARAMEDICALS
66, MATIYARI DEVA ROAD
CHINHAT, LUCKNOW-226028



BABA EDUCATIONAL SOCIETY INSTITUTE OF PARAMEDICAL COLLEGE OF NURSING



LABORATORIES:

1. NURSING FOUNDATION – LABORATORY

Nursing foundation laboratory .Area as per the norms of INC. it is created to help the students to develop and understanding the philosophy, objective, theories and process of nursing in various clinical settings. It aimed at helping the students to acquire knowledge, understanding and develop skill in techniques of nursing procedures and practice them in clinical setting. For which we have well equipped lab with 10 beds, 5 manikin for performing and practice of various nursing procedures including 1 CPR.



PRINCIPAL
BABA EDUCATIONAL SOCIETY
COLLEGE OF NURSING
INSTITUTE OF PARAMEDICALS
56, MATIYARI DEVA ROAD
CHINHAT, LUCKNOW-226028



BABA EDUCATIONAL SOCIETY INSTITUTE OF PARAMEDICAL COLLEGE OF NURSING



2. MIDWIFERY AND CHILDHEALTH NURSING –LAB

Institution has midwifery and child Health Nursing Laboratory as per the Indian nursing council regulatory body. This laboratory is designed for students to appreciate the concepts and principles of midwifery and obstetrical nursing. It helps students to acquire knowledge and skills in rendering nursing service to normal and high-risk pregnant women to antenatal and postnatal periods in hospital and community settings. And also, modern approach to child care, identification, prevention and nursing management of common health problems of new born and children. It also helps to develop skills in managing normal and high-risk neonates and participate in family welfare programmes. This laboratory provides firsthand experience in assessment of antenatal case, intranasal case, post-natal case, neonatal assessment and demonstration of nursing care and handling problems accordingly. Institution has total 27 different highly effective models and 5 mannequins of mother and baby. Students are taught different procedures in MCH laboratory before going to clinical areas. This lab provides solid foundation for pediatric and midwifery nursing i.e., firsthand experience to handling neonates and children with the help of simulated model (manikins) and also performing related nursing procedures, before going to actual clinical setting.





BABA EDUCATIONAL SOCIETY INSTITUTE OF PARAMEDICAL COLLEGE OF NURSING



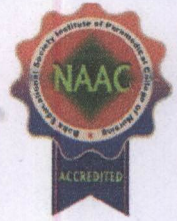
3. Community Health Nursing - Lab

Institution has community health nursing laboratory is designed for the students to develop an understanding of the recent modern approach to appreciate the principles of promotion and maintain of health and also identification, prevention and management of common health problems in collaboration with community health team and members of the family and also with community leader, this laboratory, equipped with models community bags, for learning bag techniques, and various audio-visual aids related to community health.





BABA EDUCATIONAL SOCIETY INSTITUTE OF PARAMEDICAL COLLEGE OF NURSING



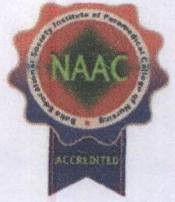
4. Nutrition Lab:-

Institution has designed to help the students to acquire knowledge of nutrition for maintenance of optimum health of different stages of life and its application to nursing. This is a separate lab equipped with various models, posters, flash cards, flipcharts for nutrition education and also various vessels and accessories to prepare different recipes according to different kinds of food for different illness. Institution has all the articles to make proper food and variety dishes.



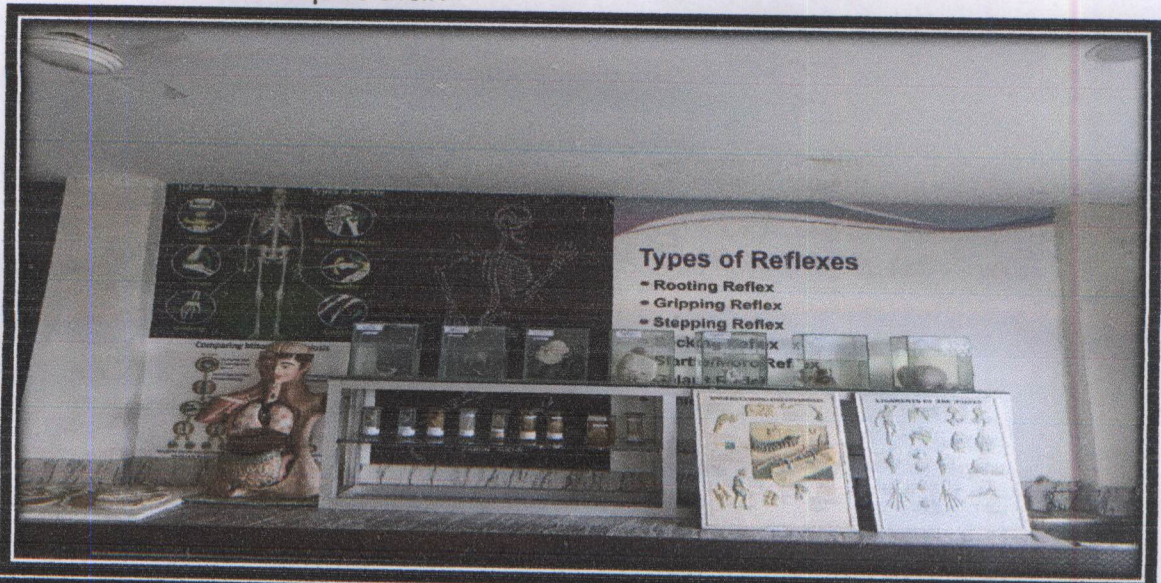


BABA EDUCATIONAL SOCIETY INSTITUTE OF PARAMEDICAL COLLEGE OF NURSING



5 Pre-Clinical Science Lab/Anatomy Lab

The pre-clinical science laboratory is designed with the purpose of helping the students to acquire knowledge of the normal structure and function of various human body systems and to identify any deviation from normal health in order to render effective nursing care. The aim of the laboratory is to educate the students to understand the normal body parts with use of models specimens etc. and to correlate its function. This will enhance the student's ability to understand the various disease conditions. The pre-clinical science lab consist of all the equipment such as adult human articulated skeleton, adult skull, pelvic, heart with large blood vessels, eye with different section, ear with different section, full set of disarticulated adult human skeleton, specimen like face, small and large intestine, skin, heart, liver and different charts of all the systems. The lab is well furnished in such a way that the students are able to acquire their.





BABA EDUCATIONAL SOCIETY INSTITUTE OF PARAMEDICAL COLLEGE OF NURSING



6. Computer Lab: -

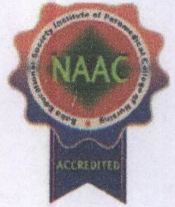
Institution has separate computer laboratory with 25 computers for student's to develop basic understandings of the use of computers and its applications in nursing. The laboratory is Well-equipped computer with LAN internet facility. Entire campus is Wi-Fi enabled, facilitating students to access internet 24X7.



**PRINCIPAL
BABA EDUCATIONAL SOCIETY
COLLEGE OF NURSING
INSTITUTE OF PARAMEDICALS
56, MATIYARI DEVA ROAD
CHINHAT, LUCKNOW-226028**

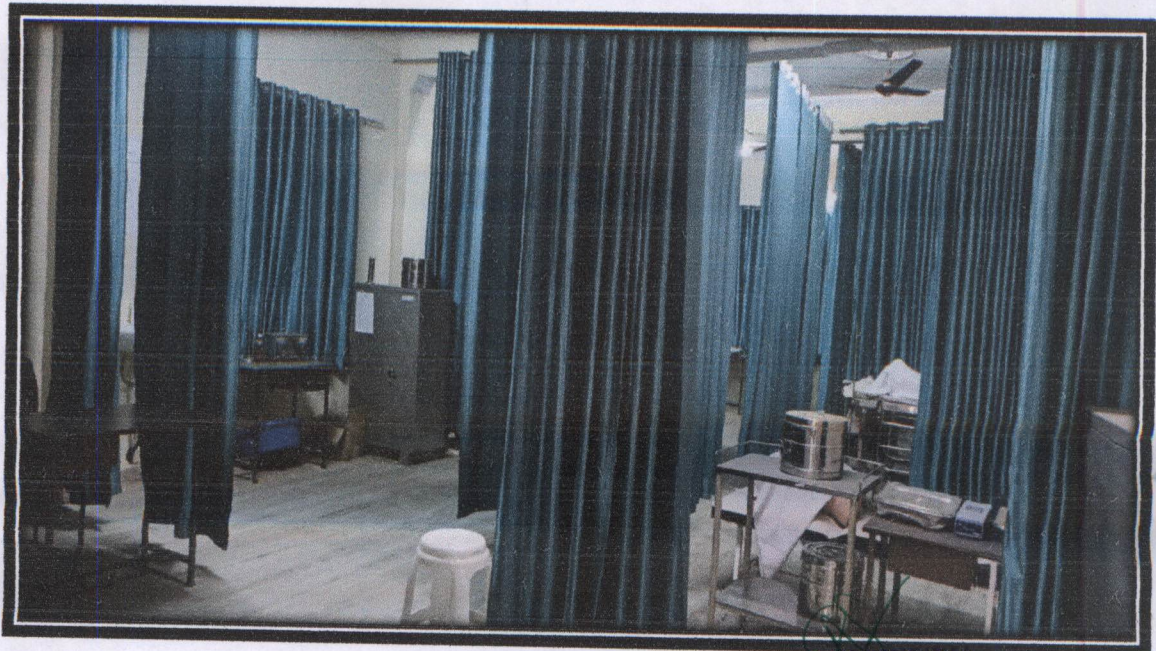


BABA EDUCATIONAL SOCIETY INSTITUTE OF PARAMEDICAL COLLEGE OF NURSING



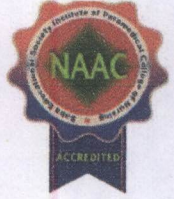
7. Advanced Skill Lab

Institution has advanced nursing skill lab covers the area of 810 sqft It has facilities like full body manikin, which is specifically designed for professional nursing training. This high-quality manikin will provide a wide range of possible exercises including both first aid & emergency situations. Such as male & female urethral catheterization, CPR Model, Suturing Model, Wound care, IM injections, Breast Self Examination, episiotomy, Tracheotomy care, manual delivery model etc. as per Indian nursing council.





BABA EDUCATIONAL SOCIETY INSTITUTE OF PARAMEDICAL COLLEGE OF NURSING



8.AV AIDS LAB

Audio – Visual aids communicate the ideas regarding learning activities to the students in essay manner. A.V. Aids lab is opened for the students with latest equipment of LCD Projector, computer, laptop, TV, OHP, DVD player, Camera, Tape recorder, charts, models, posters and different types of boards which can provide high-tech educational media to support the teaching-learning activities of the students. The audiovisual aids lab is equipped with models, posters and charts prepared by the students.





PRINCIPAL
BABA EDUCATIONAL SOCIETY
COLLEGE OF NURSING
INSTITUTE OF PARAMEDICALS
56, MATIYARI DEVA ROAD
CHINHAT, LUCKNOW-226028



**BABA EDUCATIONAL SOCIETY
INSTITUTE OF PARAMEDICAL
COLLEGE OF NURSING**




AUDITORIUM HALL

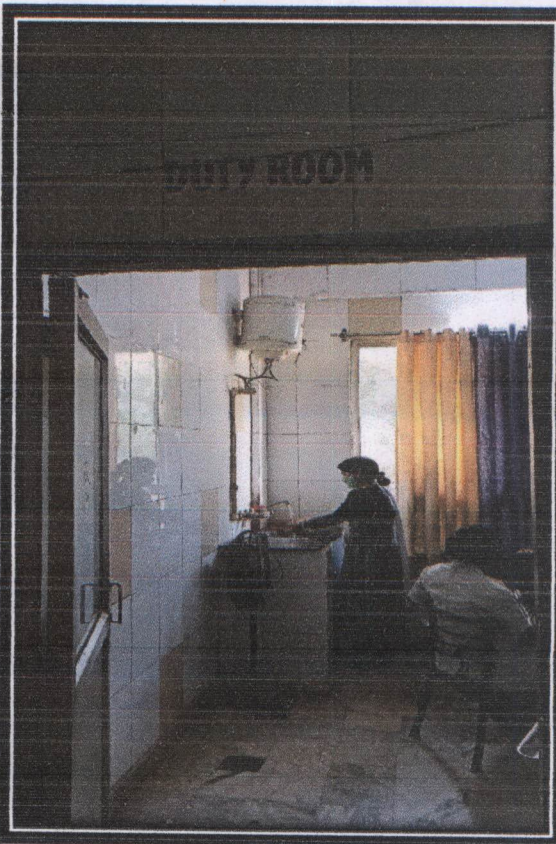
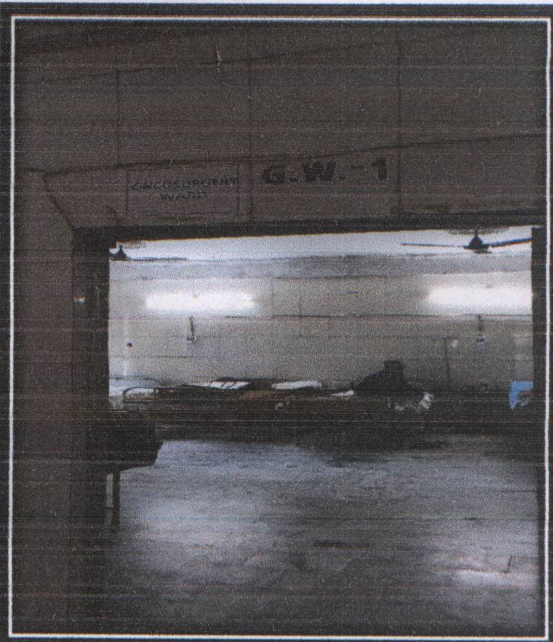


PRINCIPAL
BABA EDUCATIONAL SOCIETY
COLLEGE OF NURSING
INSTITUTE OF PARAMEDICALS
56, MATIYARI DEVA ROAD
CHINHAT, LUCKNOW-226028

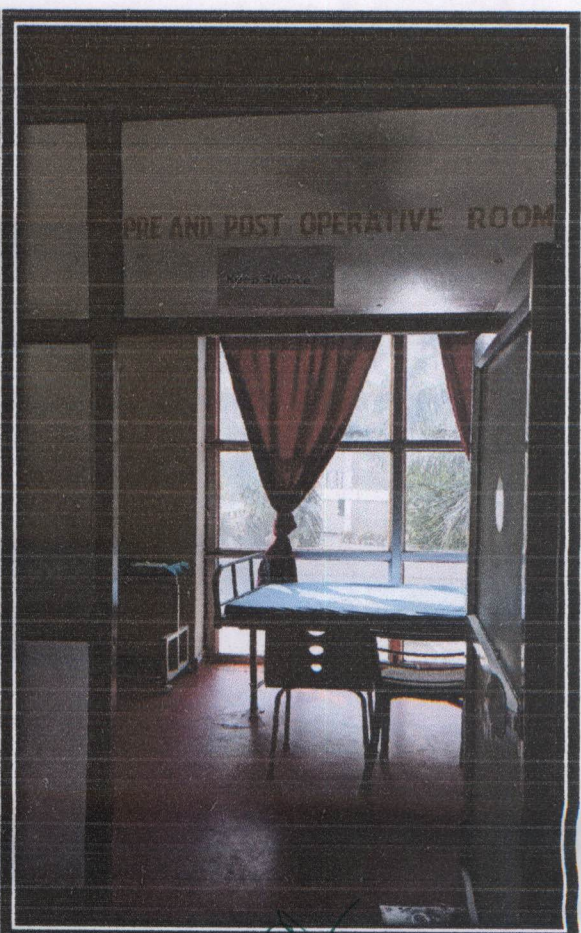
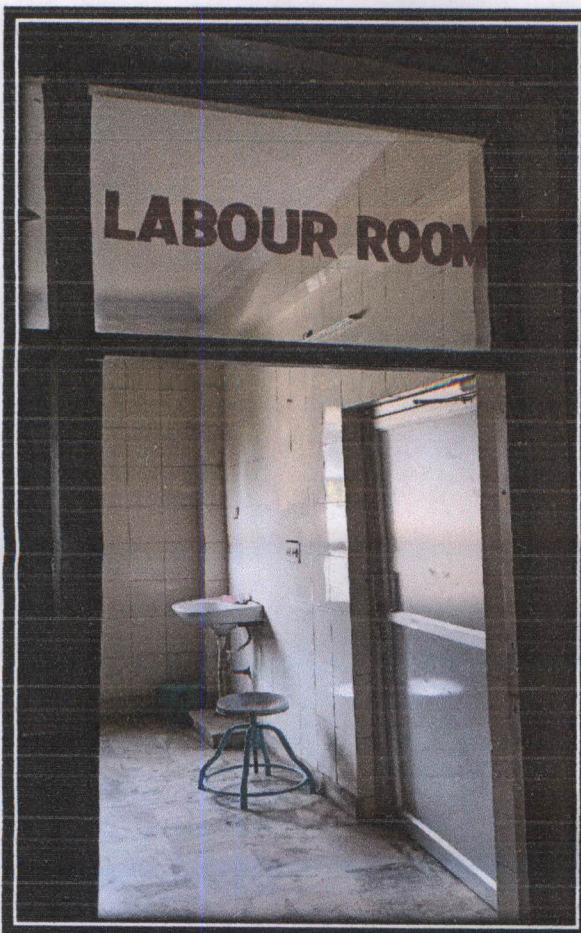



PRINCIPAL
UNIVERSITY SOCIETY
COLLEGE OF NURSING
INSTITUTE OF PARAMEDICALS
56, MATIYARI DEVA ROAD
CHINHAT, LUCKNOW-226028

THE FACILITIES AS PER THE STIPULATIONS OF THE RESPECTIVE REGULATORY BODIES WITH GEO TAGGING



PRINCIPAL
BABA EDUCATIONAL SOCIETY
COLLEGE OF NURSING
INSTITUTE OF PARAMEDICALS
56, MATIYARI DEVA ROAD
CHINHAT, LUCKNOW-226028



PRINCIPAL
BABA EDUCATIONAL SOCIETY
COLLEGE OF NURSING
INSTITUTE OF PARAMEDICALS
56, MATIYARI DEVA ROAD
CHINHAT, LUCKNOW-226028