

ADMINISTRATIVE BLOCK



PRINCIPAL
BWA EDUCATIONAL SOCIETY
COLLEGE OF NURSING
INSTITUTE OF PARAMEDICALS
56, MATIYARI DEVA ROAD
CHUNYAT, LUCKNOW-226028



BABA EDUCATIONAL SOCIETY
COLLEGE OF NURSING
INSTITUTE OF PARAMEDICALS
56, MATIYARI DEVA ROAD
CHINHAT, LUCKNOW-226028



PRINCIPAL
BABA EDUCATIONAL SOCIETY
COLLEGE OF NURSING
INSTITUTE OF PARAMEDICALS
55, MATIYARI DEVA ROAD
INHAT, LUCKNOW-226028

CONFERENCE HALL



PRINCIPAL
BABA EDUCATIONAL SOCIETY
COLLEGE OF NURSING
INSTITUTE OF PARAMEDICALS
56, MATIYARI DEVA ROAD
CHINHAT, LUCKNOW-226028



**BABA EDUCATIONAL SOCIETY
INSTITUTE OF PARAMEDICAL
COLLEGE OF NURSING**



AUDITORIUM HALL

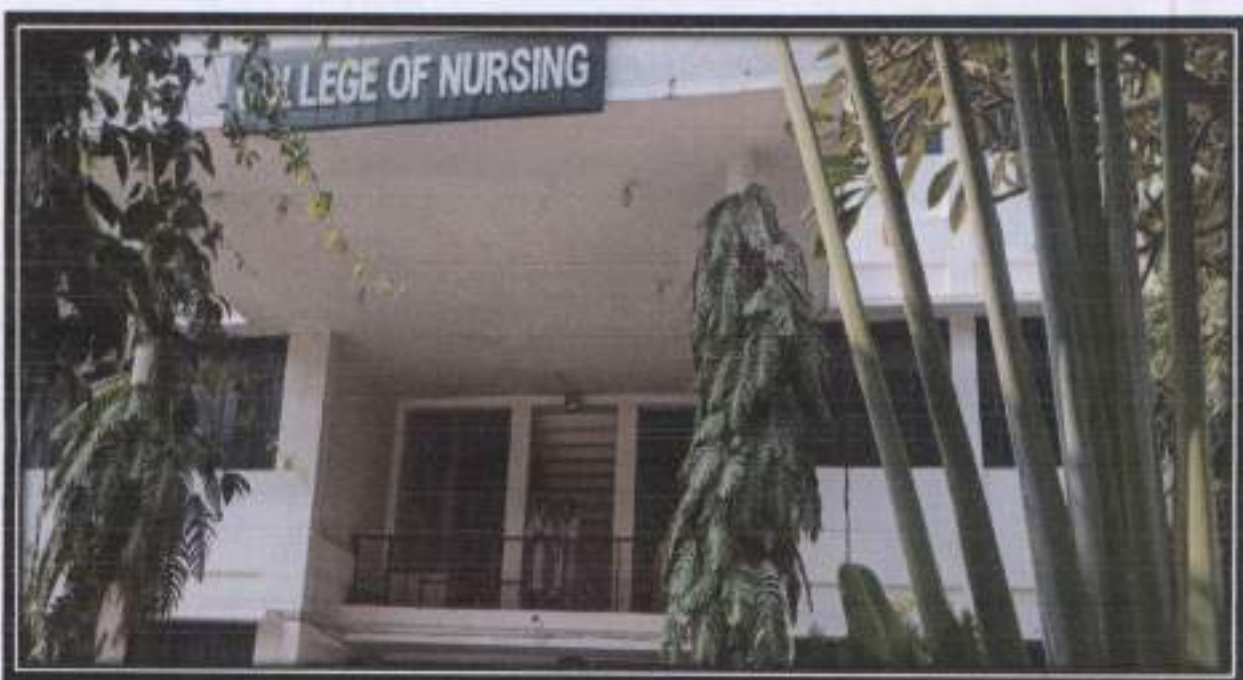


BABA EDUCATIONAL SOCIETY
COLLEGE OF NURSING
INSTITUTE OF PARAMEDICALS
55, MATIYARI DEVA ROAD
CHINHAT, LUCKNOW-226028



PRINCIPAL
BABA EDUCATIONAL SOCIETY
COLLEGE OF NURSING
INSTITUTE OF PARAMEDICALS
56, MATIYARI DEVA ROAD
CHINHAT, LUCKNOW-226028

ACADEMIC BLOCK



PRINCIPAL
BABA EDUCATIONAL SOCIETY
COLLEGE OF NURSING
INSTITUTE OF PARAMEDICALS
58, MATIYARI BEAM ROAD
CHINHAT, LUCKNOW-226028

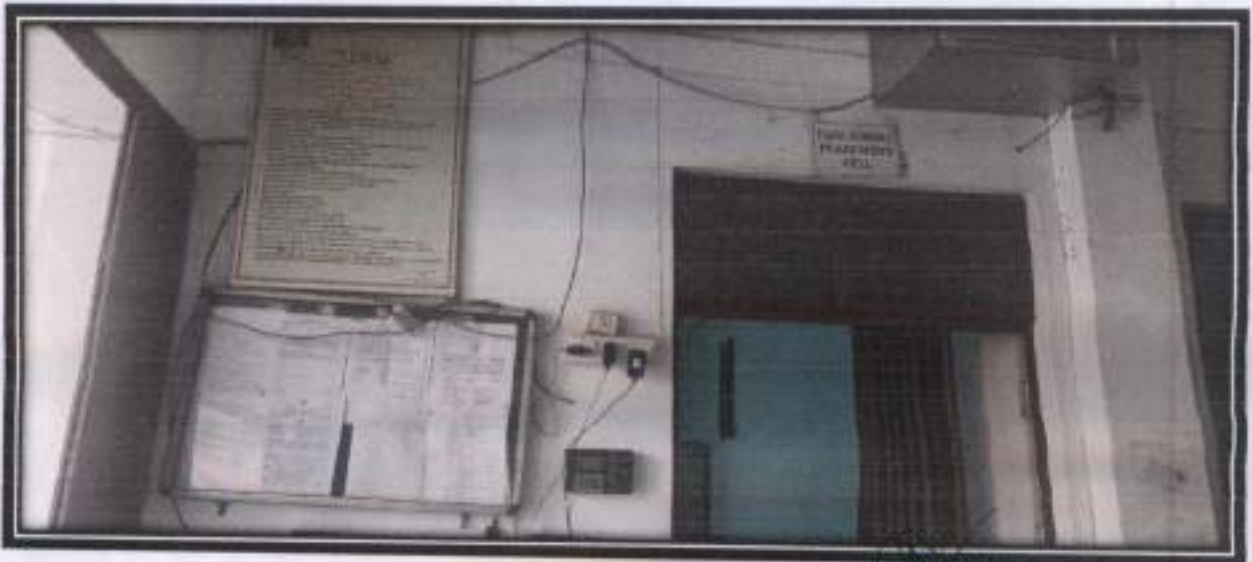
IQAC ROOM



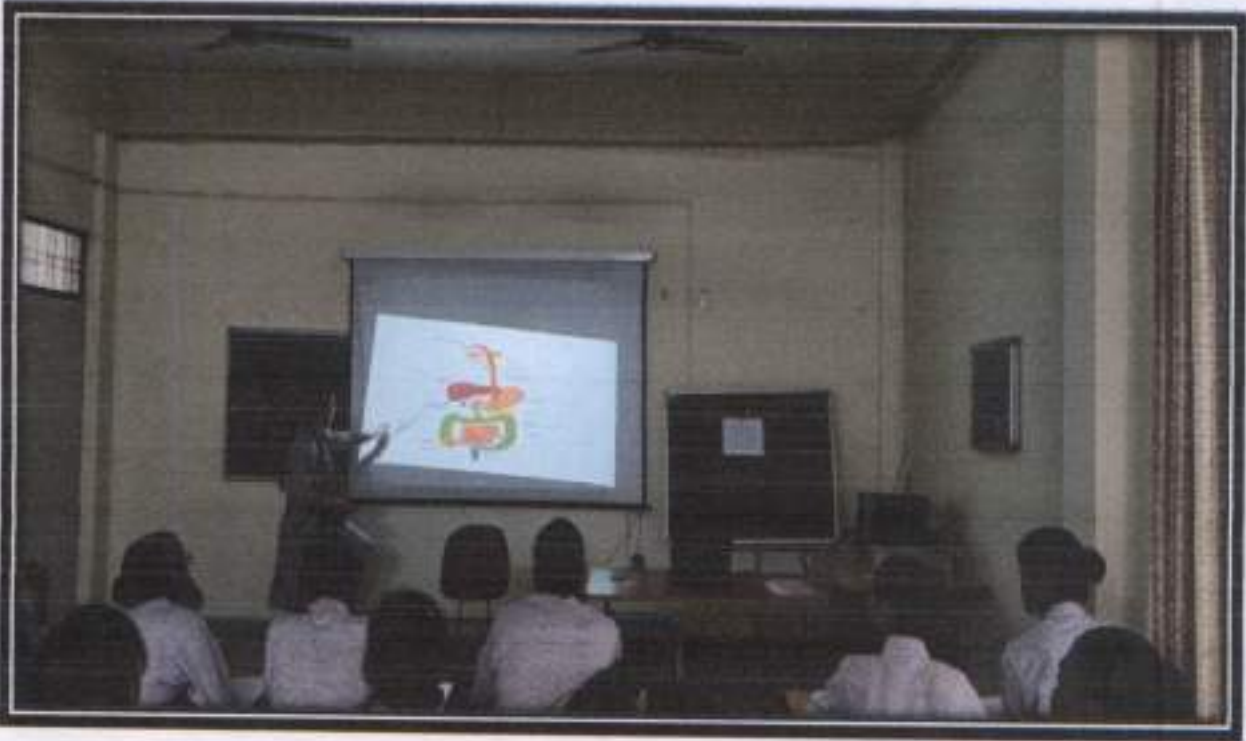
STAFF ROOM



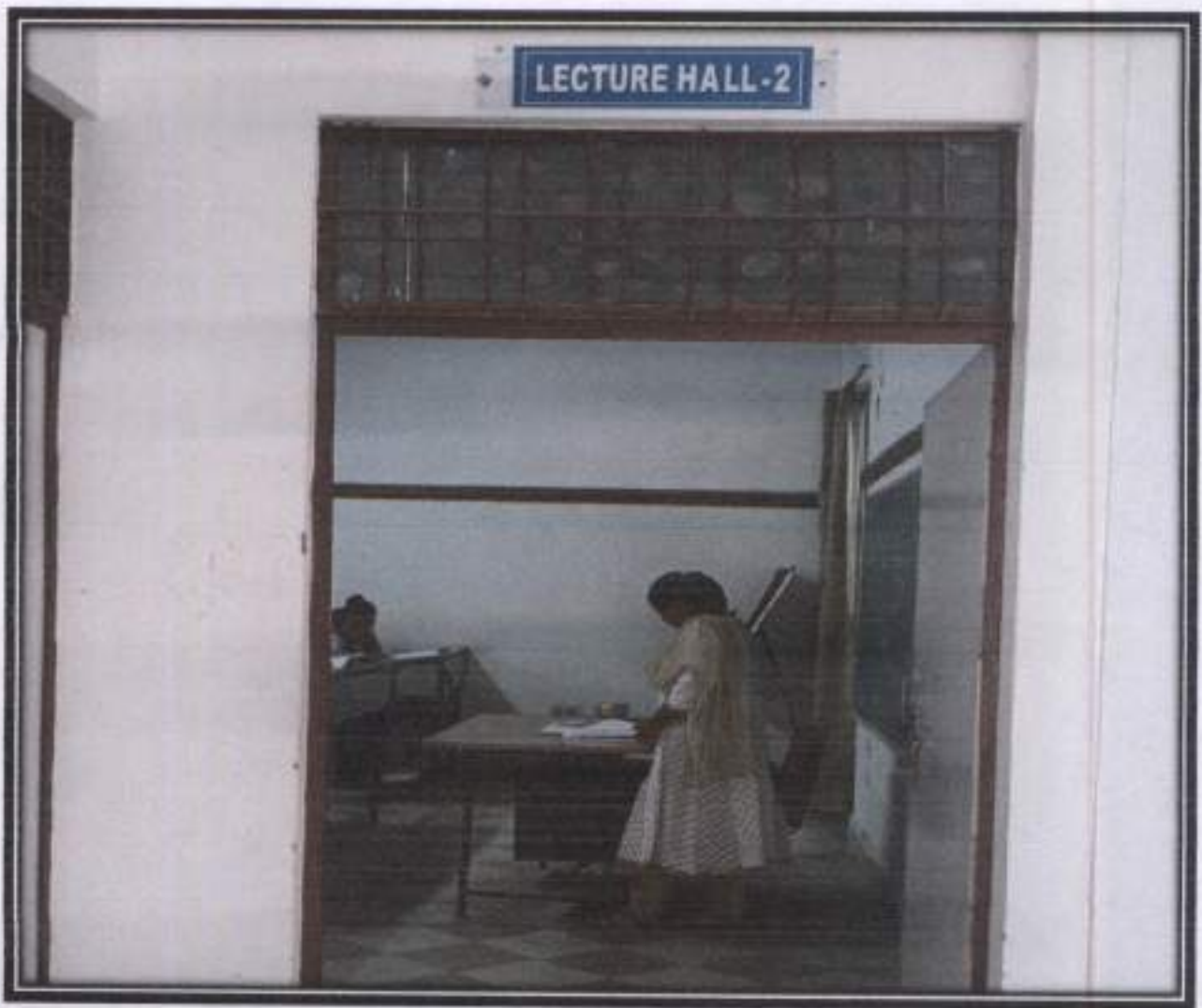
PRINCIPAL
BABA EDUCATIONAL SOCIETY
COLLEGE OF NURSING
INSTITUTE OF PARAMEDICALS
56, MATIYARI DEVA ROAD
CHINHAT, LUCKNOW-226028



PRINCIPAL
 BABA EDUCATIONAL SOCIETY
 COLLEGE OF NURSING
 INSTITUTE OF PARAMEDICALS
 56, MATIYARI DEVA ROAD
 CHINHAT, LUCKNOW-226028



INSTITUTE OF PARAMEDICALS
56, MATIYARI DEVA ROAD
CHINHAT, LUCKNOW-226028



PRINCIPAL
BABA EDUCATIONAL SOCIETY
COLLEGE OF NURSING
INSTITUTE OF PARAMEDICALS
56, MATIYARI GATE ROAD
CHINHAT, LUCKNOW-226028



**BABA EDUCATIONAL SOCIETY
COLLEGE OF NURSING
INSTITUTE OF PARAMEDICALS
56, MATIYARI DEVA ROAD
CHINNAI, TAMILNADU - 600029**



PRINCIPAL
BABA EDUCATIONAL SOCIETY
COLLEGE OF NURSING
INSTITUTE OF PARAMEDICALS
56, MATIYARI DEVA ROAD
CHINHAT, LUCKNOW-226028



BABA EDUCATIONAL SOCIETY
COLLEGE OF NURSING
INSTITUTE OF PARAMEDICALS
56, MATIYARI DEVA ROAD
CHINHAT, LUCKNOW-226028



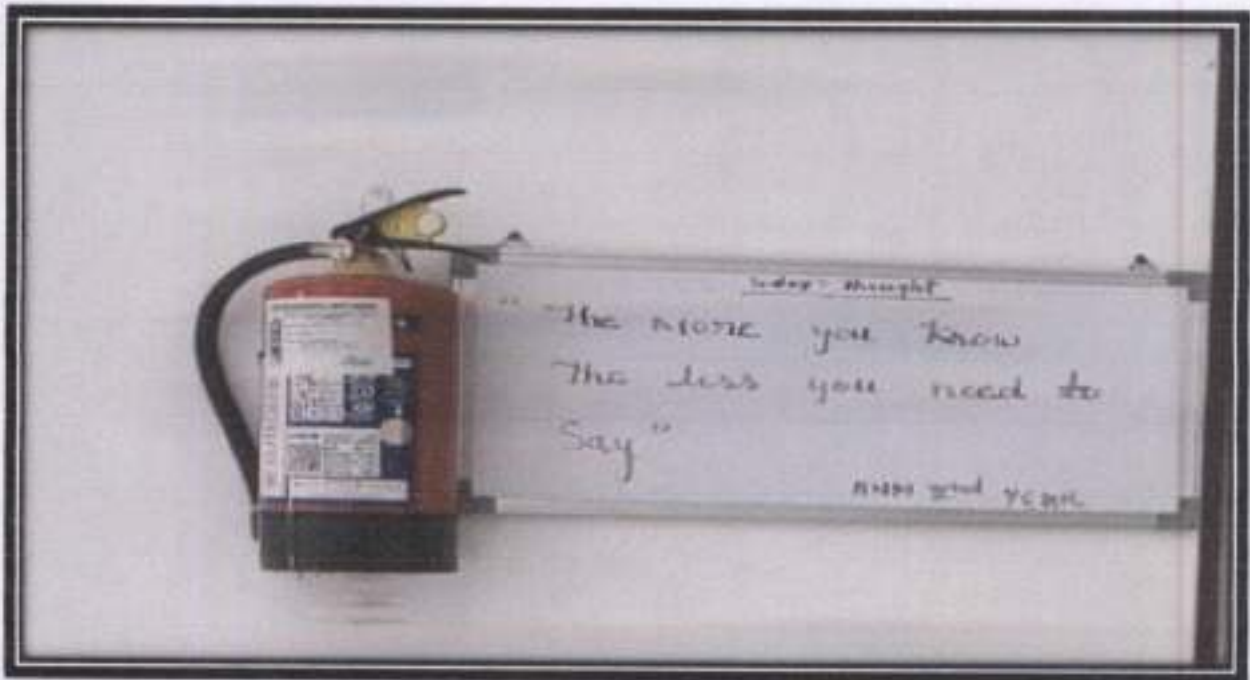
PRINCIPAL
BABA EDUCATIONAL SOCIETY
COLLEGE OF NURSING
INSTITUTE OF PARAMEDICALS
56, MATIYARI DEVA ROAD
CHINHAT, LUCKNOW-226028



PRINCIPAL
SOCIETY
COLLEGE OF NURSING
INSTITUTE OF PARAMEDICALS
56, MATIYARI DEVA ROAD
CHINHAT, LUCKNOW-226028



BABA EDUCATIONAL SOCIETY
COLLEGE OF NURSING
INSTITUTE OF PARAMEDICALS
56, MATIYARI DEVA ROAD
CHINHAT, LUCKNOW-226028




PRINCIPAL
BABA EDUCATIONAL SOCIETY
COLLEGE OF NURSING
INSTITUTE OF PARAMEDICALS
56, MATIYARI DEVA ROAD
CHINHAT, LUCKNOW-226028

SIMULATION/ LIBRARY BLOCK



PRINCIPAL
DARA GURUJI SOCIETY
COLLEGE OF NURSING
INSTITUTE OF PARAMEDICALS
56, MAIN, SEVA ROAD
CHINHAT, LULNUR-226028



PRINCIPAL
EABA EDUCATIONAL SOCIETY
COLLEGE OF NURSING
INSTITUTE OF PARAMEDICALS
S.S. MATIYARI DEVA ROAD
CHINHAT, LUCKNOW-226028

H.O.D ROOM ALL DEPARTMENT



PRINCIPAL
EASA EDUCATIONAL SOCIETY
COLLEGE OF NURSING
INSTITUTE OF PARAMEDICALS
56, MATIYARI DEVA ROAD
CHINHAT, LUCKNOW-226028



PRINCIPAL
BARA EDUCATIONAL SOCIETY
COLLEGE OF NURSING
INSTITUTE OF PARAMEDICALS
58, MATIYARI DEVA ROAD
CHINHAT, LUCKNOW-226028



PRINCIPAL
BARA EDUCATIONAL SOCIETY
COLLEGE OF NURSING
INSTITUTE OF PARAMEDICALS
55, MATIYARI DEVA ROAD
CHINHAT, LUCKNOW-226028



PRINCIPAL
EDUCATIONAL SOCIETY
COLLEGE OF NURSING
INSTITUTE OF PARAMEDICALS
50, MATIYARI DEVA ROAD
CHINHAT, LUCKNOW-226028

HOSTEL BLOCK



INSTITUTE OF PARAMEDICALS
56, MATIYARI DEVA ROAD
CHINHAT, LUCKNOW-226028



PRINCIPAL
BABA EDUCATIONAL SOCIETY
COLLEGE OF NURSING
INSTITUTE OF PARAMEDICALS
56, MATIYARI DEVA ROAD
CHINHAT, LUCKNOW-226028



PRINCIPAL
INSTITUTE OF NURSING
INSTITUTE OF PARAMEDICALS
55, MATIYARI DEVA ROAD
CHINHAT, LUCKNOW-226028

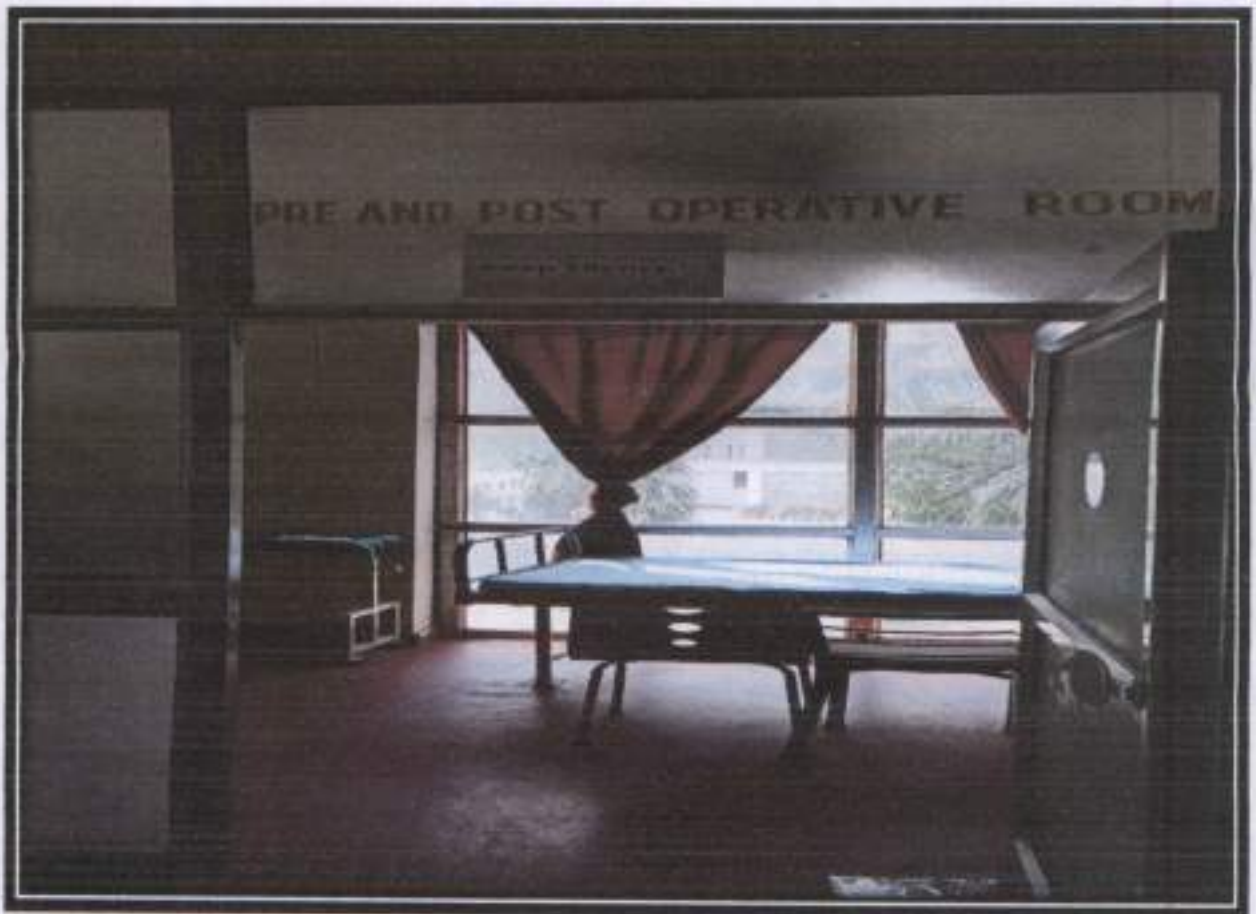
Hospital Block



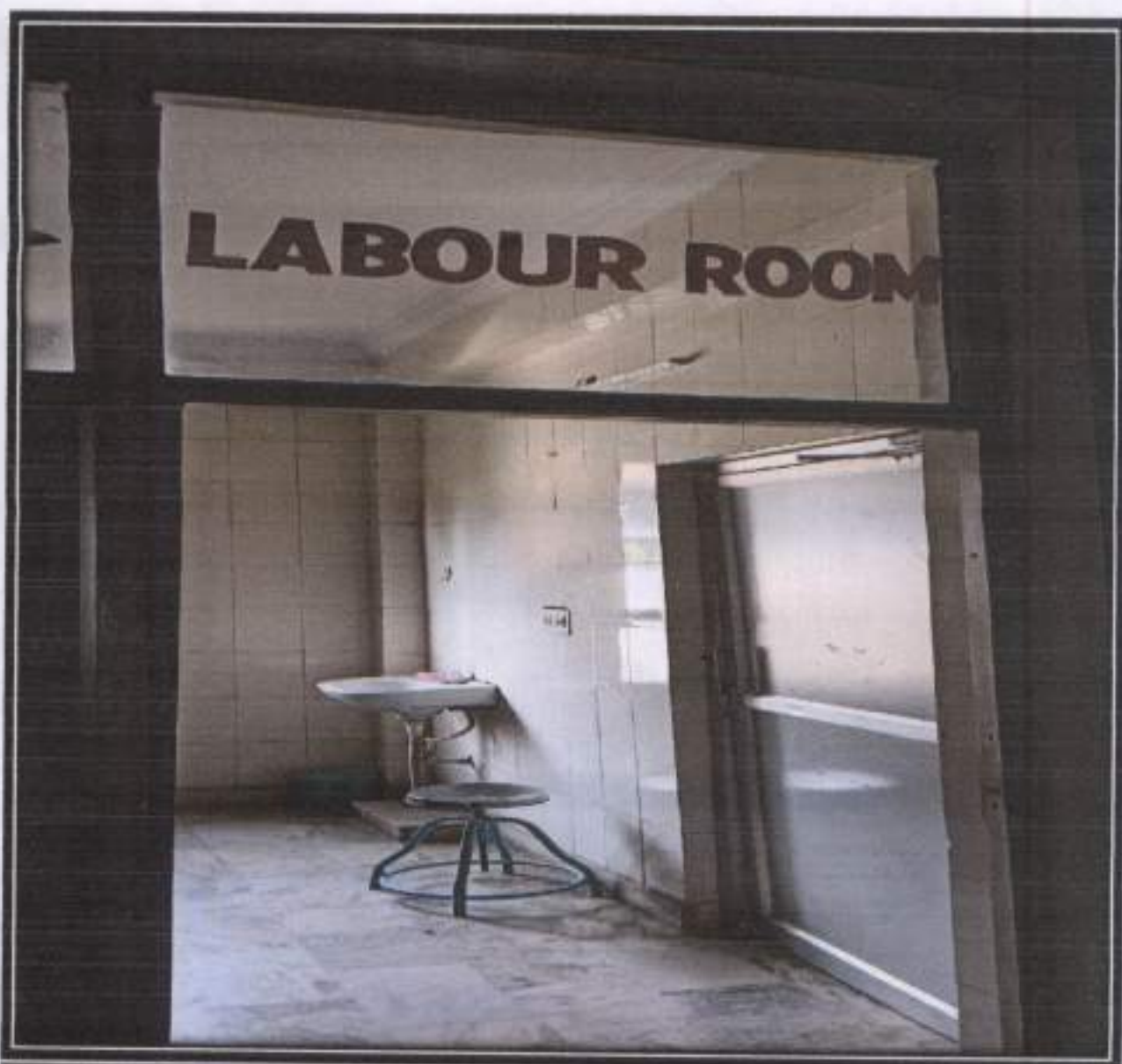
PRINCIPAL
SABA EDUCATIONAL SOCIETY
COLLEGE OF NURSING
INSTITUTE OF PARAMEDICAL
SCIENCE
BACHKHOVA-2-6178



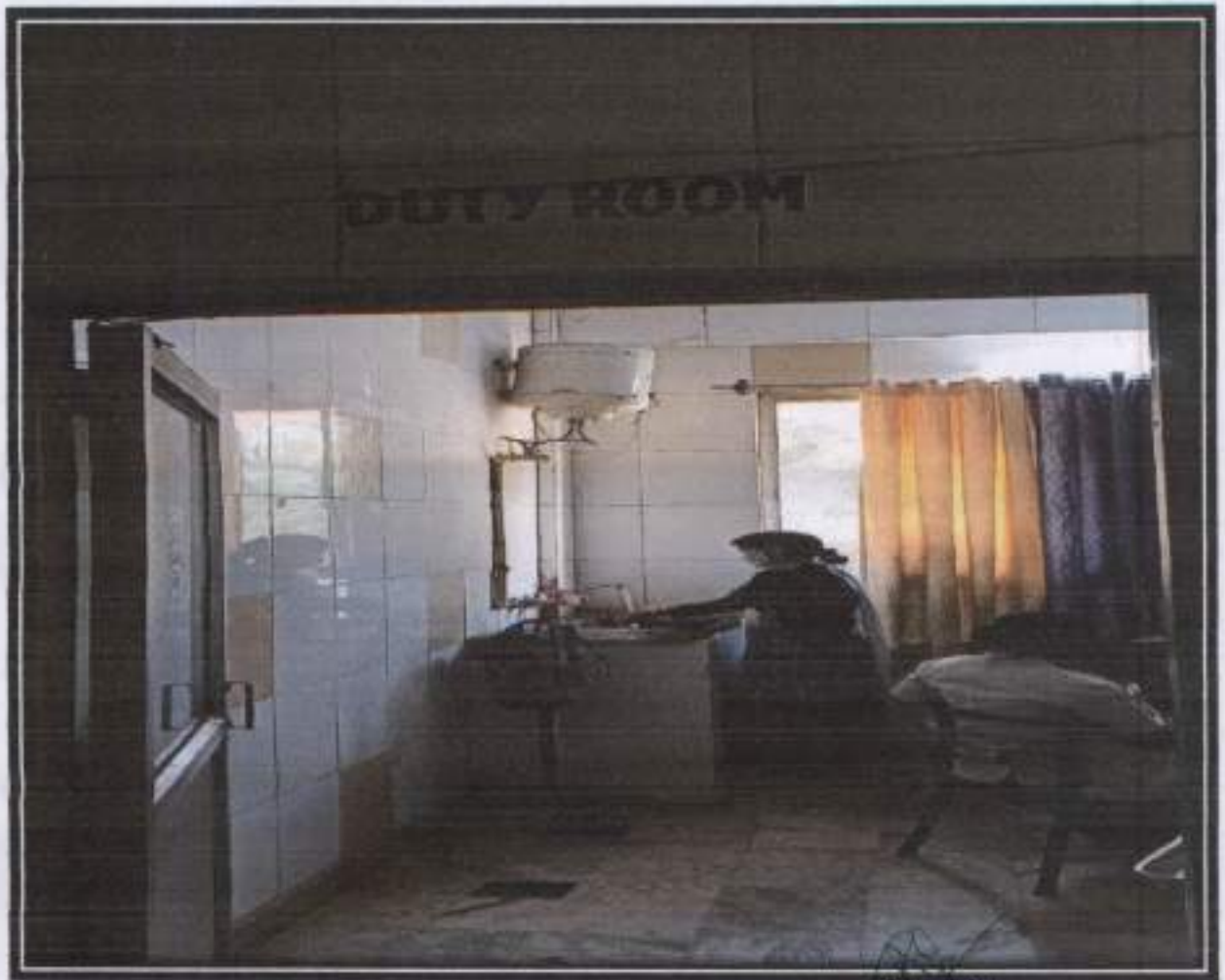
PRINCIPAL
BABA EDUCATIONAL SOCIETY
COLLEGE OF NURSING
INSTITUTE OF PARAMEDICALS
56, MATIYARI DEVA ROAD
CHINMAT, LUCKNOW-226028




PRINCIPAL
BABA EDUCATIONAL SOCIETY
COLLEGE OF NURSING
INSTITUTE OF PARAMEDICALS
56, MATIYARI DEVA ROAD
CHINHAT, LUCKNOW-226028



PRINCIPAL
BABA EDUCATIONAL SOCIETY
COLLEGE OF NURSING
INSTITUTE OF PARAMEDICALS
56, MATIYARI DEVA ROAD
CHINHAT, LUCKNOW-226028



PRINCIPAL
BABA EDUCATIONAL SOCIETY
COLLEGE OF NURSING
INSTITUTE OF PARAMEDICALS
56, MATIYARI DEVA ROAD
CHINHAT, LUCKNOW-226028



**BABA EDUCATIONAL SOCIETY INSTITUTE OF
PARAMEDICAL COLLEGE OF NURSING**



PRINCIPAL
BABA EDUCATIONAL SOCIETY
COLLEGE OF NURSING
INSTITUTE OF PARAMEDICALS
56, MATIYARI DEVA ROAD
CHINHAT, LUCKNOW-226028



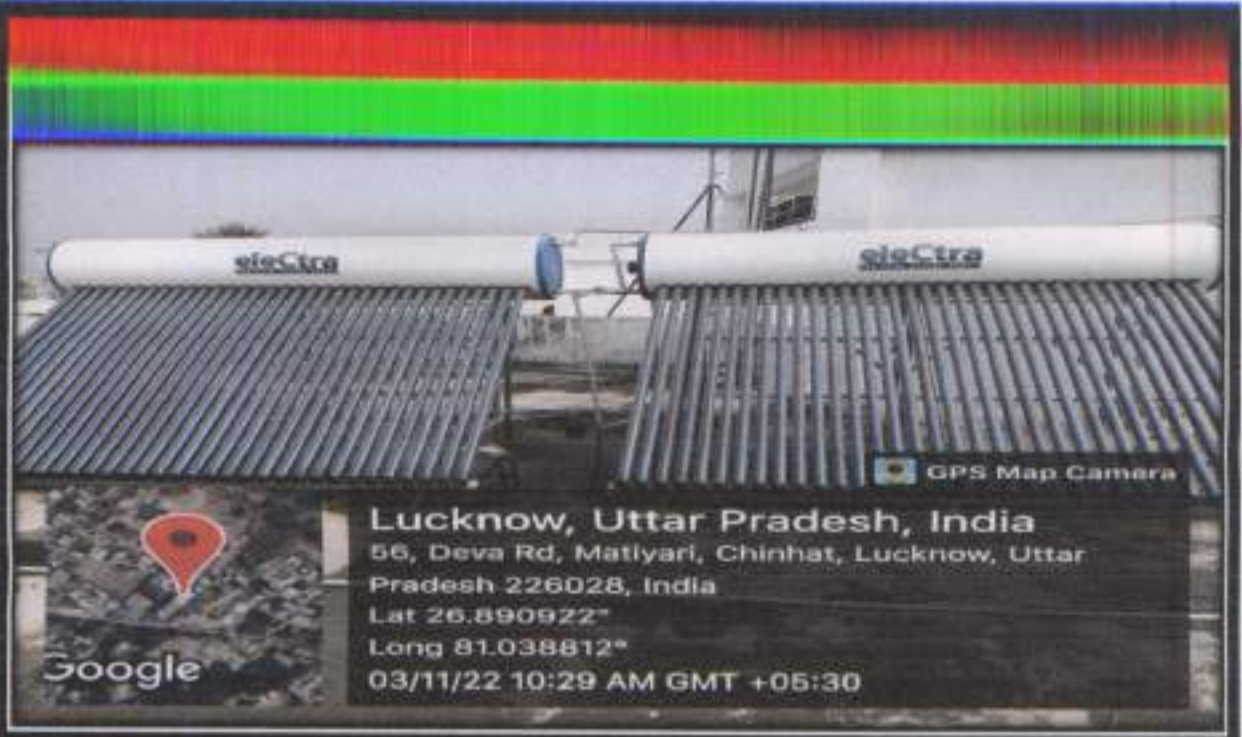
PRINCIPAL
BARA EDUCATIONAL SOCIETY
COLLEGE OF NURSING
INSTITUTE OF PARAMEDICALS
56, MATIYARI DEVA ROAD
CHINHAT, LUCKNOW-226028



PRINCIPAL
SOCIETY
COLLEGE OF NURSING
INSTITUTE OF PARAMEDICALS
53, MATIYARI DEVA ROAD
CHINHAT, LUCKNOW-226028

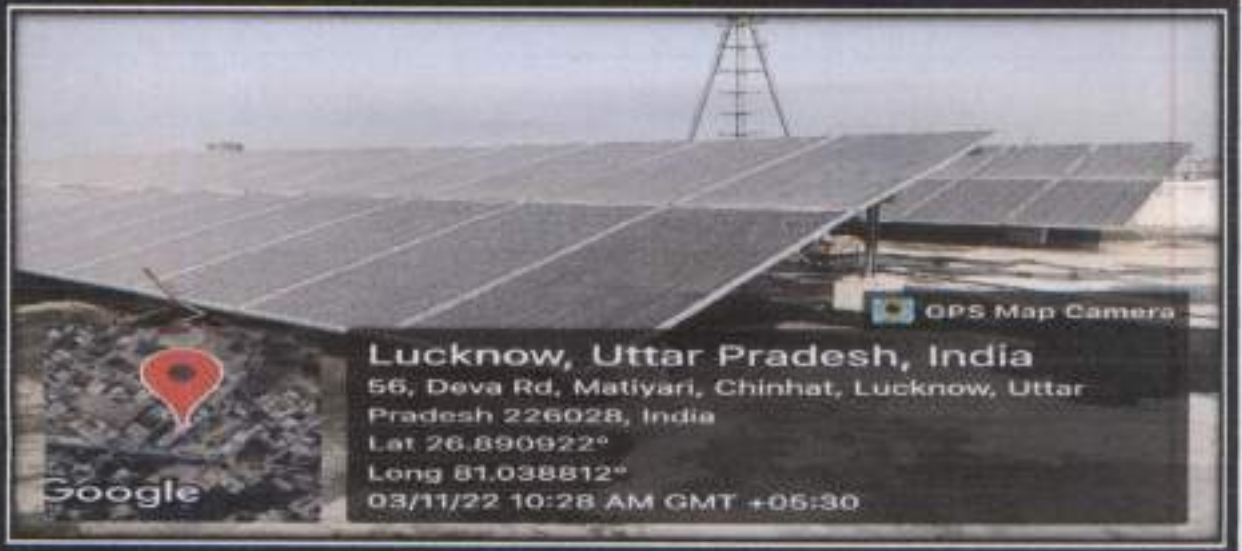


PRINCIPAL
BABA EDUCATIONAL SOCIETY
COLLEGE OF NURSING
INSTITUTE OF PARAMEDICALS
66, MATIYARI DEVA ROAD
CHINHAT, LUCKNOW-226028



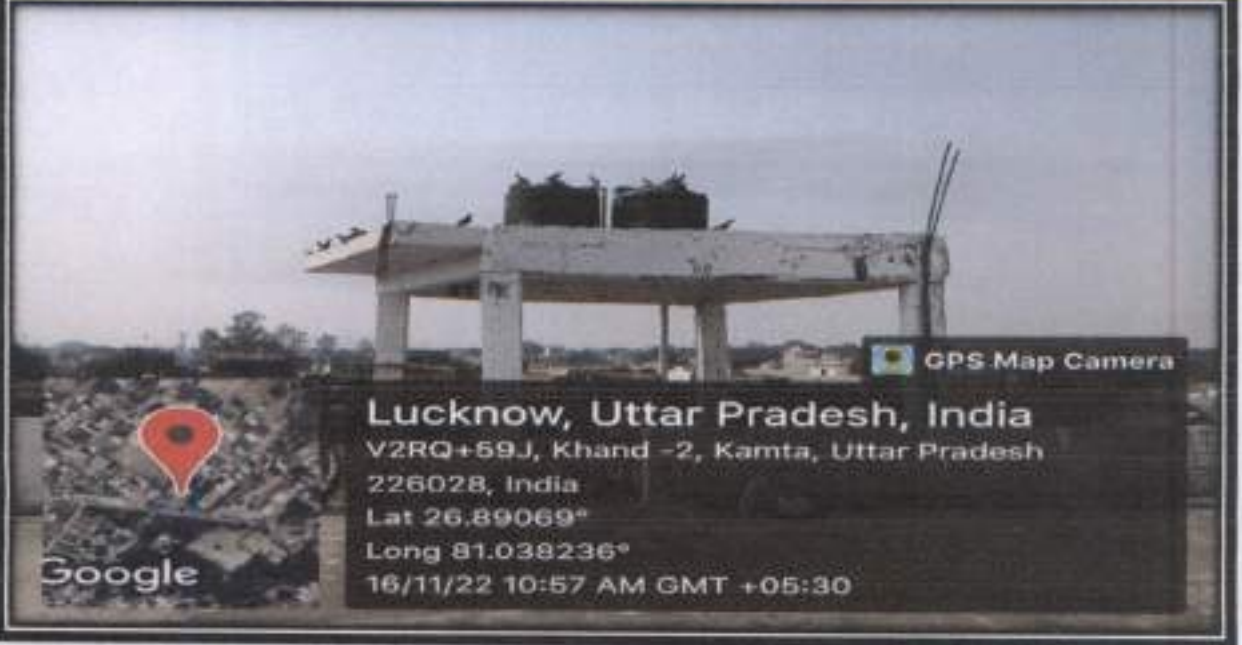
Lucknow, Uttar Pradesh, India
 56, Deva Rd, Matiyari, Chinhat, Lucknow, Uttar Pradesh 226028, India
 Lat 26.890922°
 Long 81.038812°
 03/11/22 10:29 AM GMT +05:30

GPS Map Camera



Lucknow, Uttar Pradesh, India
 56, Deva Rd, Matiyari, Chinhat, Lucknow, Uttar Pradesh 226028, India
 Lat 26.890922°
 Long 81.038812°
 03/11/22 10:28 AM GMT +05:30

GPS Map Camera



Lucknow, Uttar Pradesh, India
 V2RQ+69J, Khand -2, Kamta, Uttar Pradesh 226028, India
 Lat 26.89069°
 Long 81.038236°
 16/11/22 10:57 AM GMT +05:30

GPS Map Camera

PRINCIPAL
 BABA EDUCATIONAL SOCIETY
 COLLEGE OF NURSING
 INSTITUTE OF PARAMEDICALS
 56, MATIYARI DEVA ROAD
 CHINHAT, LUCKNOW-226028